



# SKD Series Fixed Foundation Mast Systems

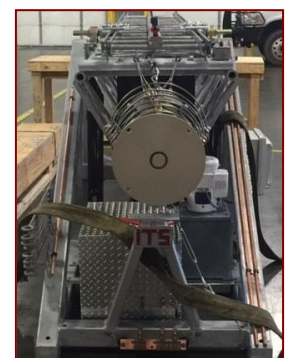
## Summary ~ SKD Series ~ Fixed Foundation or Platform-Mounted Mast System

- Heavy-duty, Super heavy-duty and Ultra-heavy-duty locking telescopic pneumatic mast having elevations to  $\pm 100'0''$  (30m) AGL, self-supporting and guy capable, rugged construction, high-strength heat treated aluminum tubes & collars, low-friction synthetic bearings, shock absorbing bumpers; includes mast base plate and external brackets; mast payload capacity to 1,200lbs (544kg) at 80'0" (24.4m) and to 450lbs (204kg) at 100'0" AGL; lower elevation and lighter payload alternatives available
- 120/220VAC/50-60Hz limit switch controlled electric winch or tandem hydraulic cylinder tilt assembly, integrated safety features; NEMA 4 locking enclosure houses mast operating controls – tilt and telescoping functions; onboard compressor system with convenient external power switch; optional manual operation with smaller masts and lighter payloads

## Pneumatic Mast Selection ~ Will-Burt Models to 100'0" (30m)

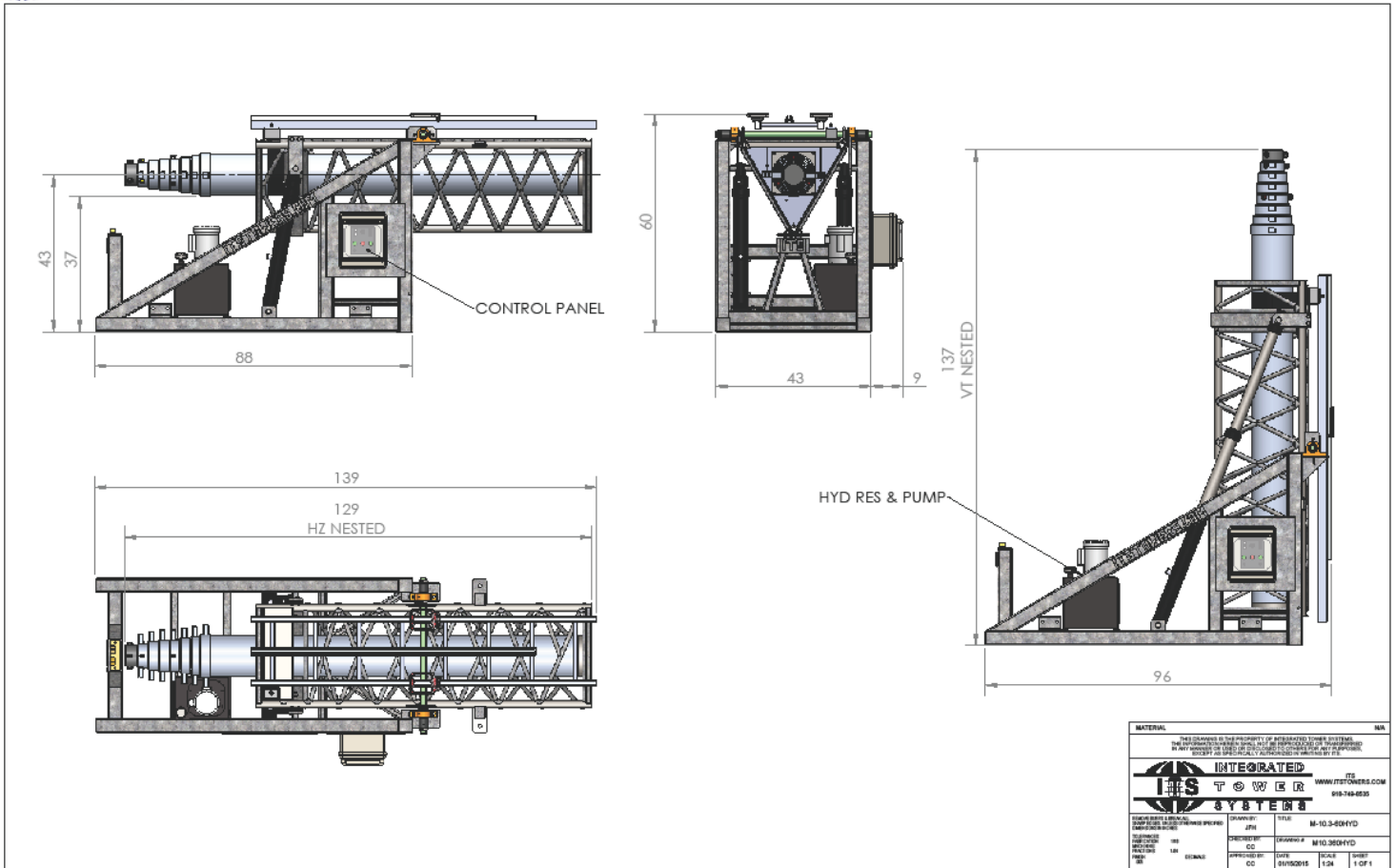
The primary benefits and features of the Will-Burt pneumatic mast includes:

- » Locking collars allow the mast to remain extended indefinitely without air pressure
- » Rugged construction of high strength heat-treated aluminum tubes and collars with low friction synthetic bearings
- » Two full-length external keys on sections; collars have matching keyways that maintain directional azimuth
- » The bumpers are designed to reduce shock on extension and retraction
- » All exterior aluminum surfaces are anodized & sealed for long life; fasteners are plated steel for corrosion resistance
- » Payload capacity for select masts: to 1,200lbs (544kg) at 80'0" (24.4m) and to 450lbs (204kg) at 100'0" (30m)
- » ITS secures the pneumatic mast within a heavy-duty lattice steel exoskeleton ("truss") that protects the mast during the tilt function and offers added strength and stability to the extended mast structure
- » The truss-enclosed mast is secured to a foundation-mounting square tube steel support structure that incorporates mounting tabs appropriately sized for foundation or steel platform installation



## REPRESENTATIVE SKD SERIES

*(Hydraulic Tilt Assembly / 60' (18m) Mast)*



## REPRESENTATIVE WILL-BURT COMPANY PNEUMATIC MAST

